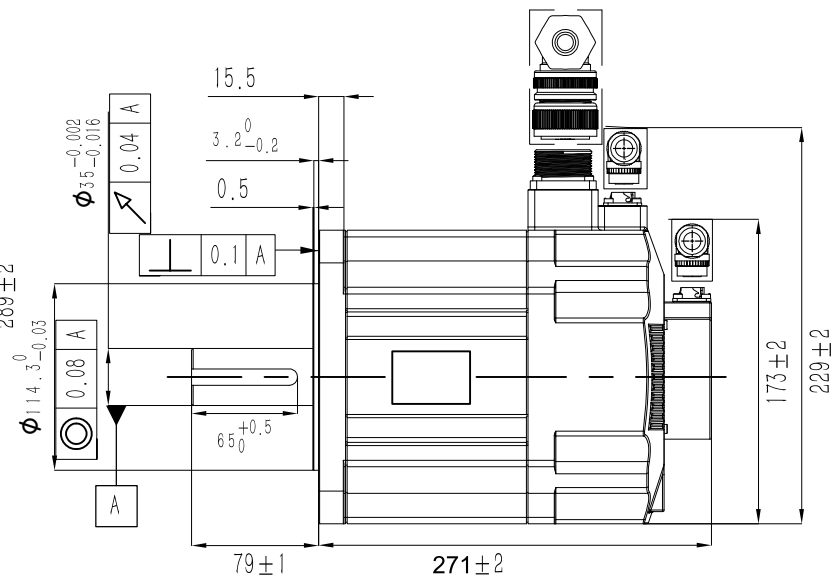
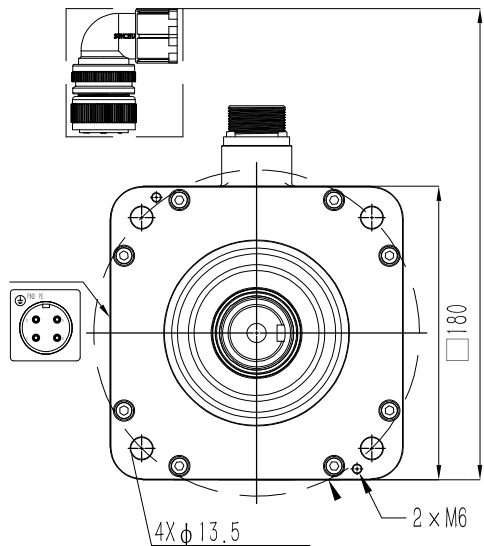
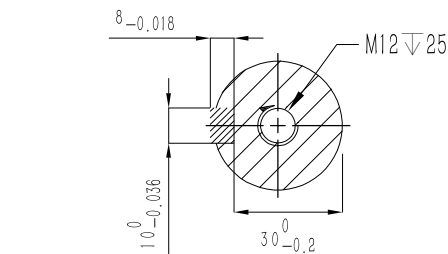
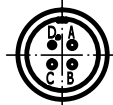


Rated Voltage (Vac)	<b>380</b>
Rated Power (w)	<b>4400</b>
Rated Torque (N.m)	<b>28.4</b>
Peak Torque (N.m)	<b>71</b>
Rated Speed (rpm)	<b>1500</b>
Peak Speed (rpm)	<b>3000</b>
Rated Current (Amp)	<b>16.3</b>
Peak Current (Amp)	<b>41</b>
Torque Const (N.m/Amp)	<b>1.74</b>
Back EMF Const (V/krpm)	<b>115</b>
Resistance (Ω)	<b>0.26</b>
Inductance (mH)	<b>6.4</b>
Inertia (kg*m <sup>2</sup> *10 <sup>-4</sup> )	<b>60.41</b>
Poles	<b>10</b>
Encoder type	<b>23bit optical</b>
IP rating	<b>IP65</b>
Mass (Kg)	<b>25.4</b>



Power connector



Wiring details of Power cable connector

Pos	A	B	C	D
Signal	U	V	W	PE
Color	red	yellow	blue	Yel/Gre

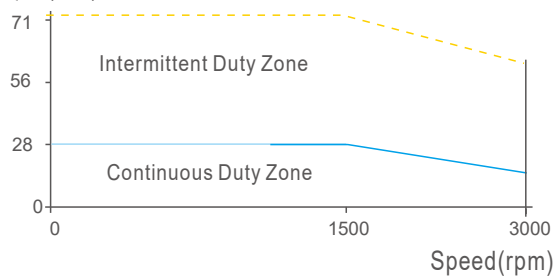
Encoder connector



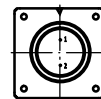
Wiring details of encoder cable connector

Pos	1	2	3	4	5	6	7	8	9	10
Signal	/	5V	0V	SD+	SD-	E+	E-	/	/	PE
Color	/	red	black	blue	yellow	brown	white	/	/	shield

Torque(Nm)



Brake connector



Brake connector

Pos	1	2	
Signal	0V	24V	
Color	/	/	

**GMT**CNT

**S2M180F4400BH**

180mm, medium inertia, 4400W servo motor  
23bit optical encoder, brake  
MS10