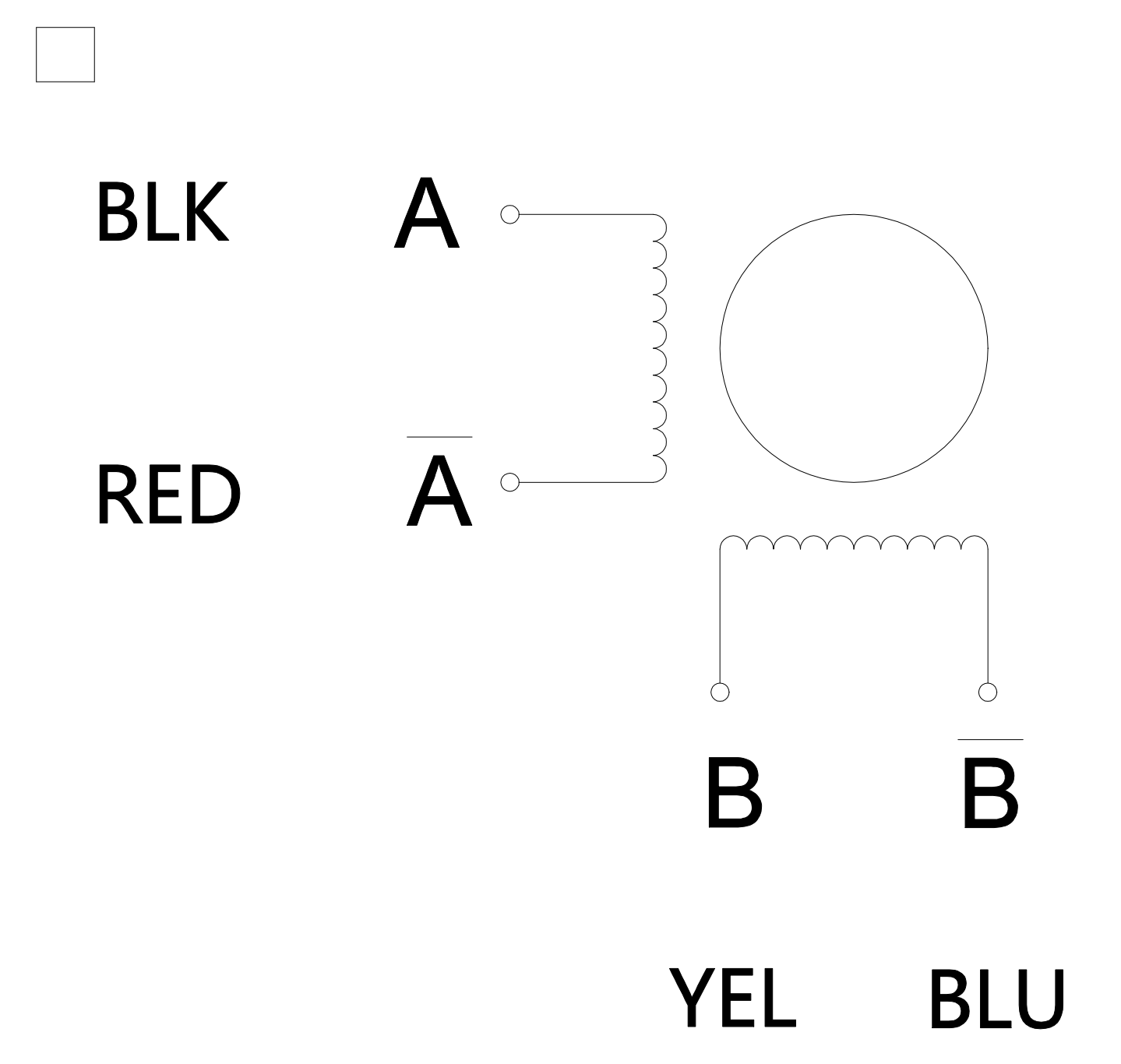
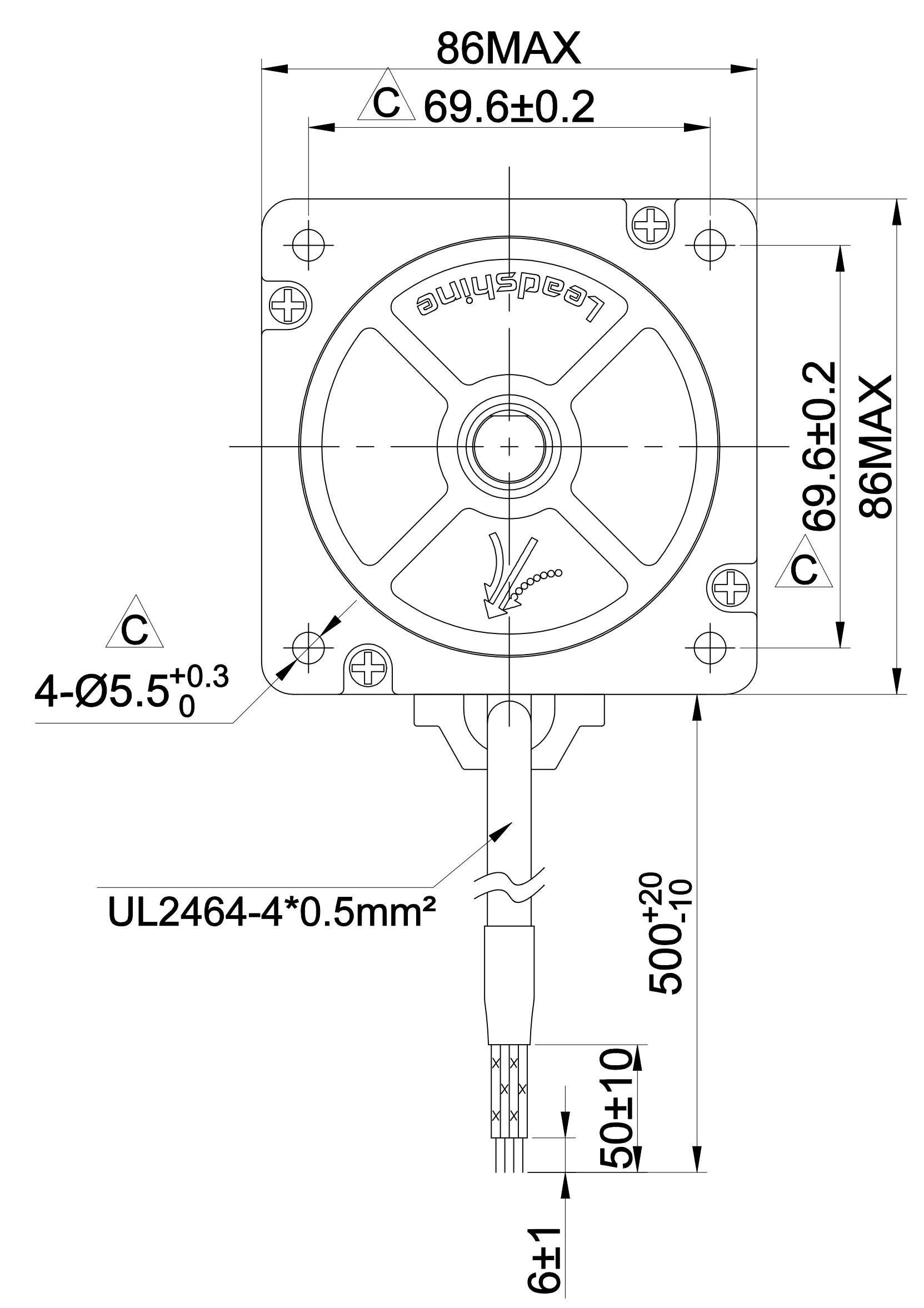
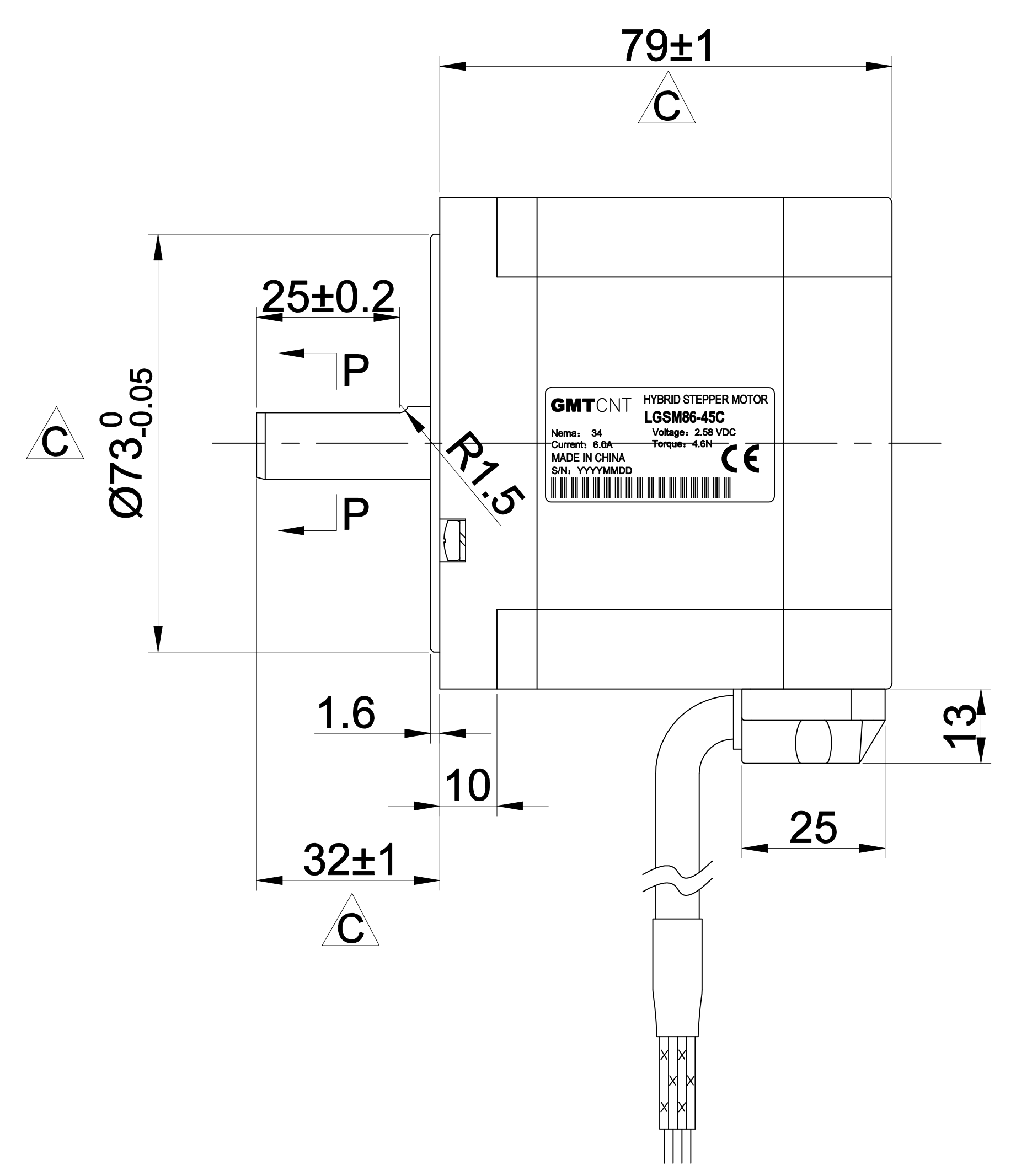
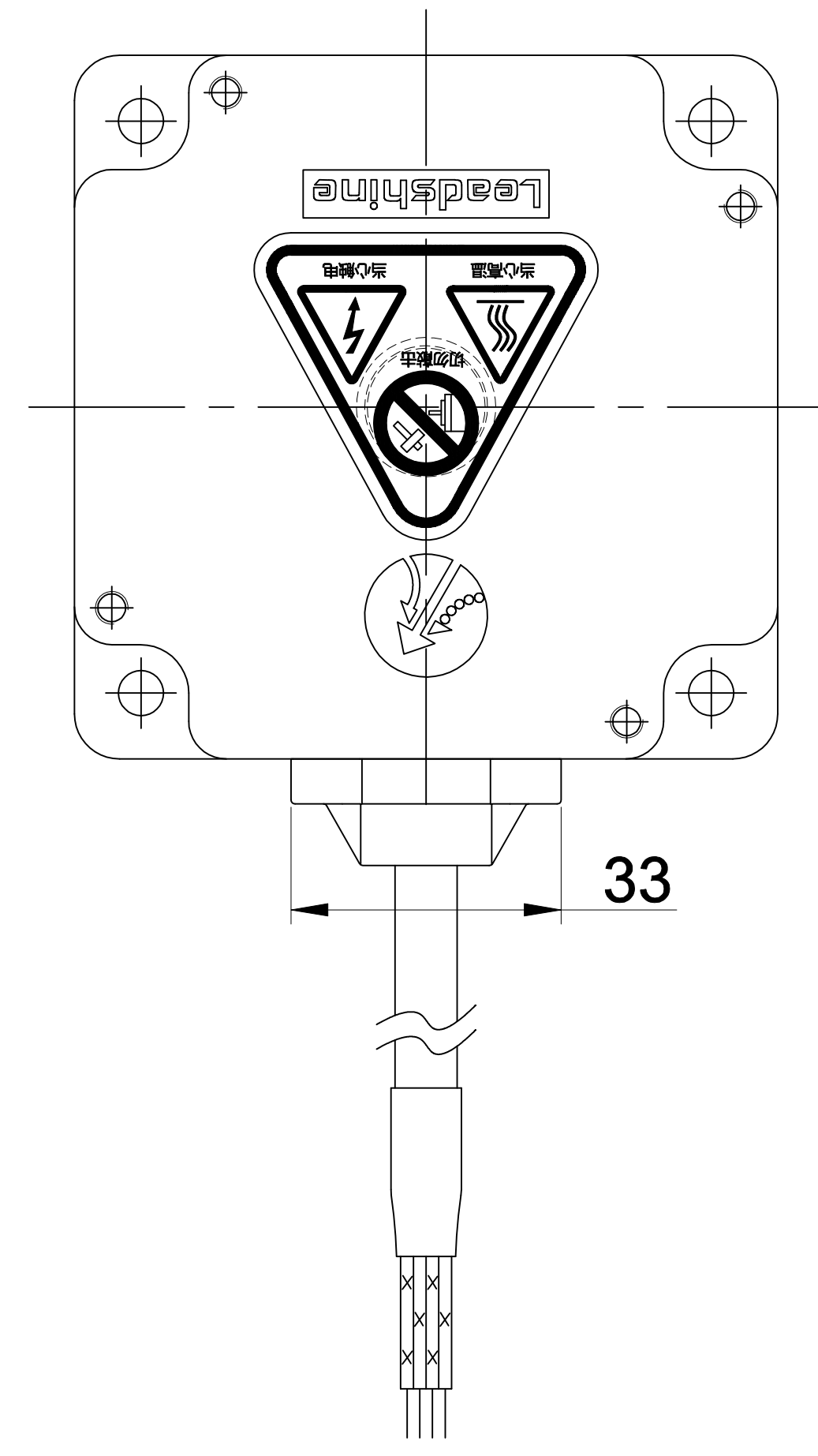


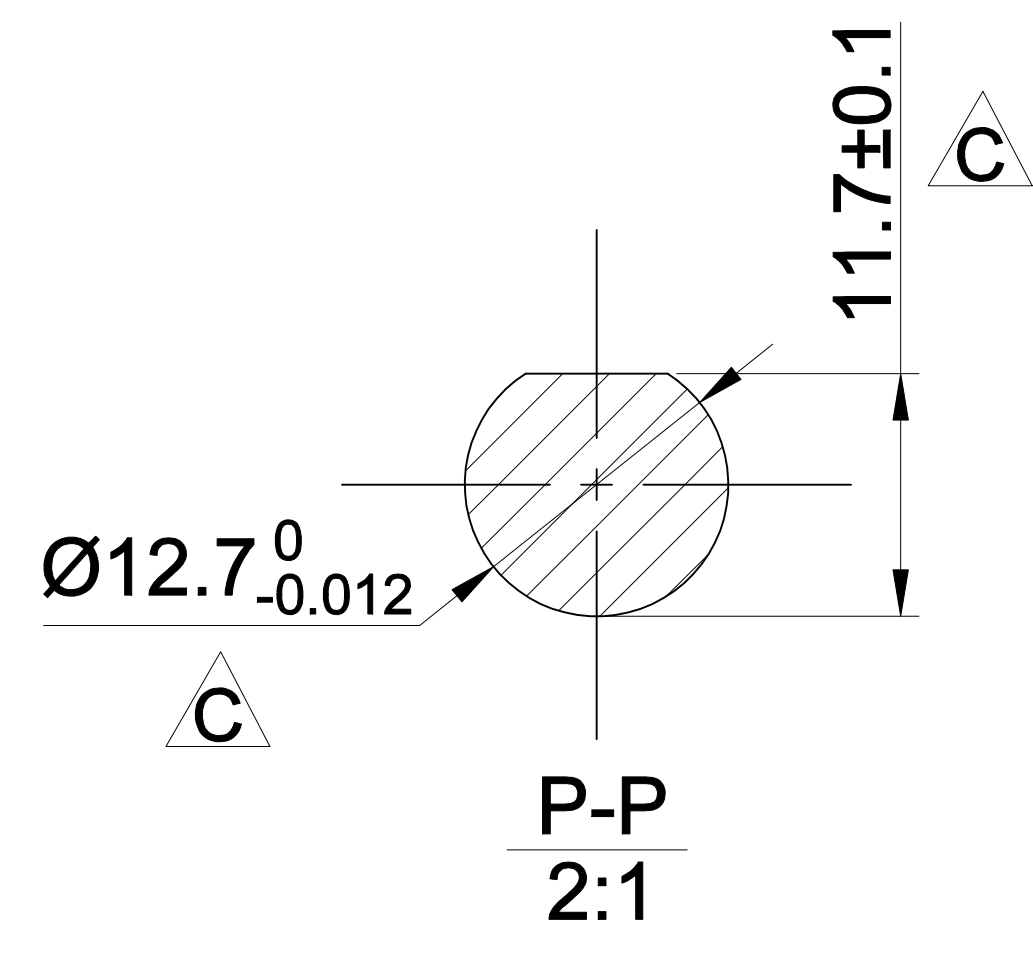
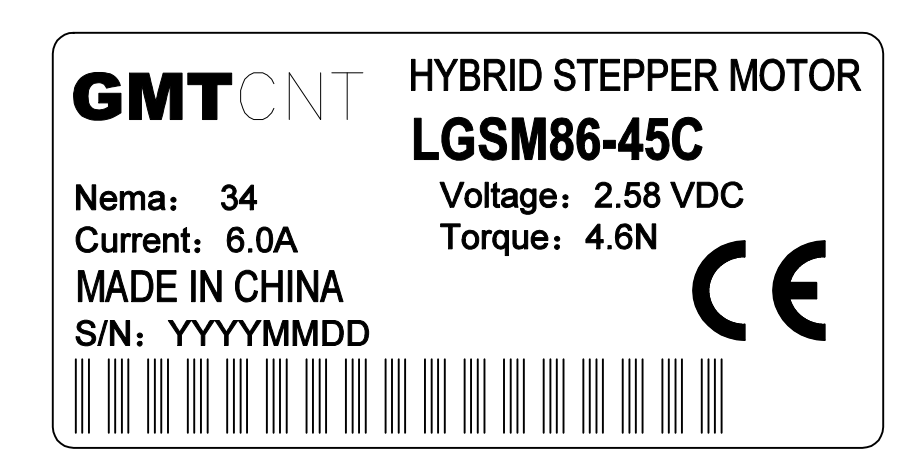
DWG.NO.

REV. LOC.	ECN NO.	REVISION RECORD	DATE	BY
△				
△				
△				

DIMENSIONS Unit=mm



STEP	A	B	A̅	B̅	
1	+	+	-	-	CCW ↑
2	-	+	+	-	
3	-	-	+	+	
4	+	-	-	+	



Specification

1	Phase	2
2	Step Angle	1.8°±5%/Step
3	Voltage	2.58 VDC
4	Current	6.0A
5	Resistance	0.43±0.1Ω
6	Inductance	2.95±20% mH
7	Holding Torque	≥460N.cm
8	Surface Treatment	
9	Dielectric Strength	△ 500VAC/5mA/1min
10	Insulation Resistance	△ ≥100MΩ/500VDC
11	Insulation Class	Class B
12	Lead Style	UL2464-4*0.5mm²
13	Weight	≈2.1KG

CTQ Sign: △ Customer; △ Process; △ Law		NAMES	SIGNATURE	DATE	TITLE
All Material are to be RoHS Compliant		DESIGN			MODEL LGSM86-45C
UNLESS OTHERWISE SPECIFIED		STANDARD			
Unit:mm <=6 ±0.1		TECHNOLOGY			DWG.NO.
>6~30 ±0.2		CHECK			
GB/T1804-m >30~120 ±0.3		APPROVE			DATE 2024.05.14
ISO 2768-1 class m >120~400 ±0.5		FIRST ANGLE METHOD		REV.	MATERIAL
		ECN SIGN		A1	A3 A1 1 of 1 1:1